

Data Summary from CAP Meeting #3

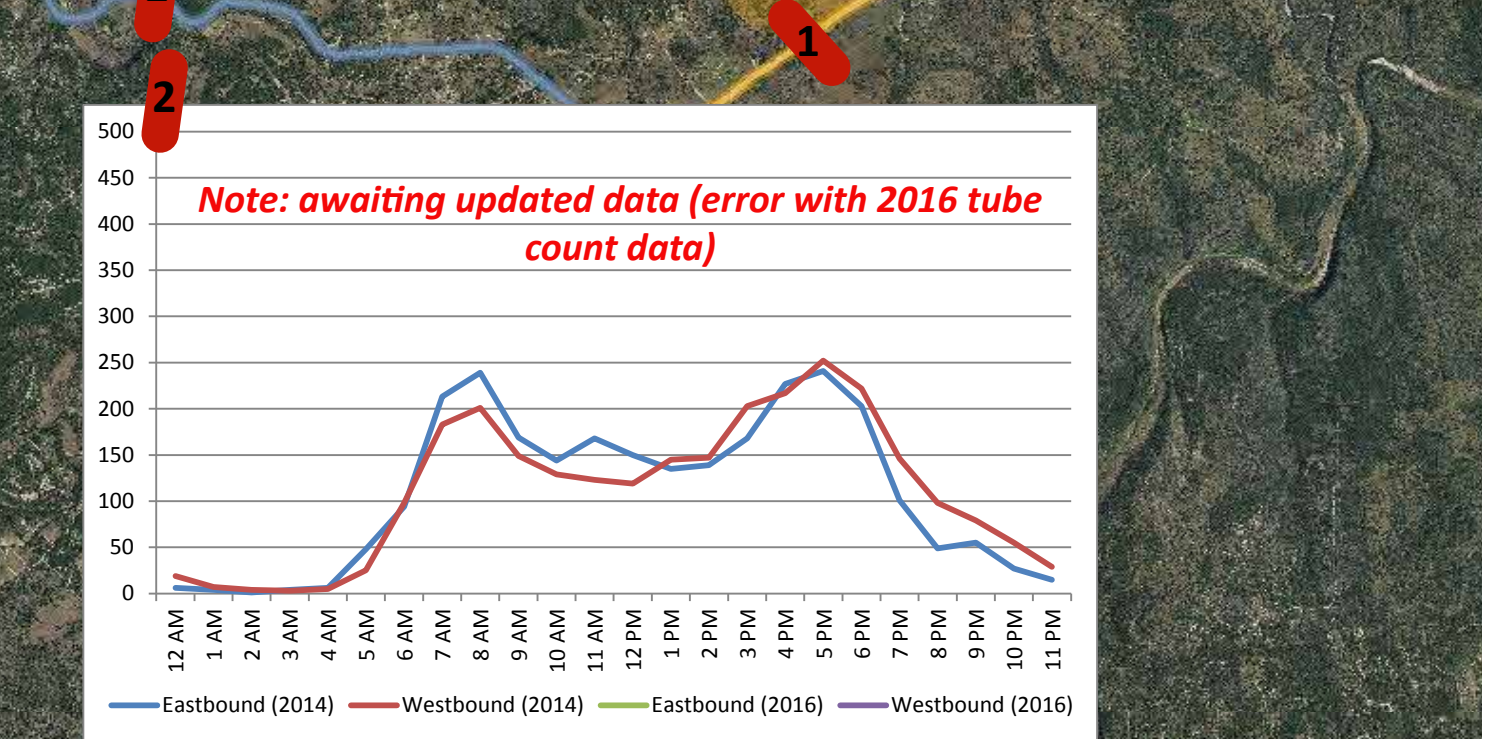
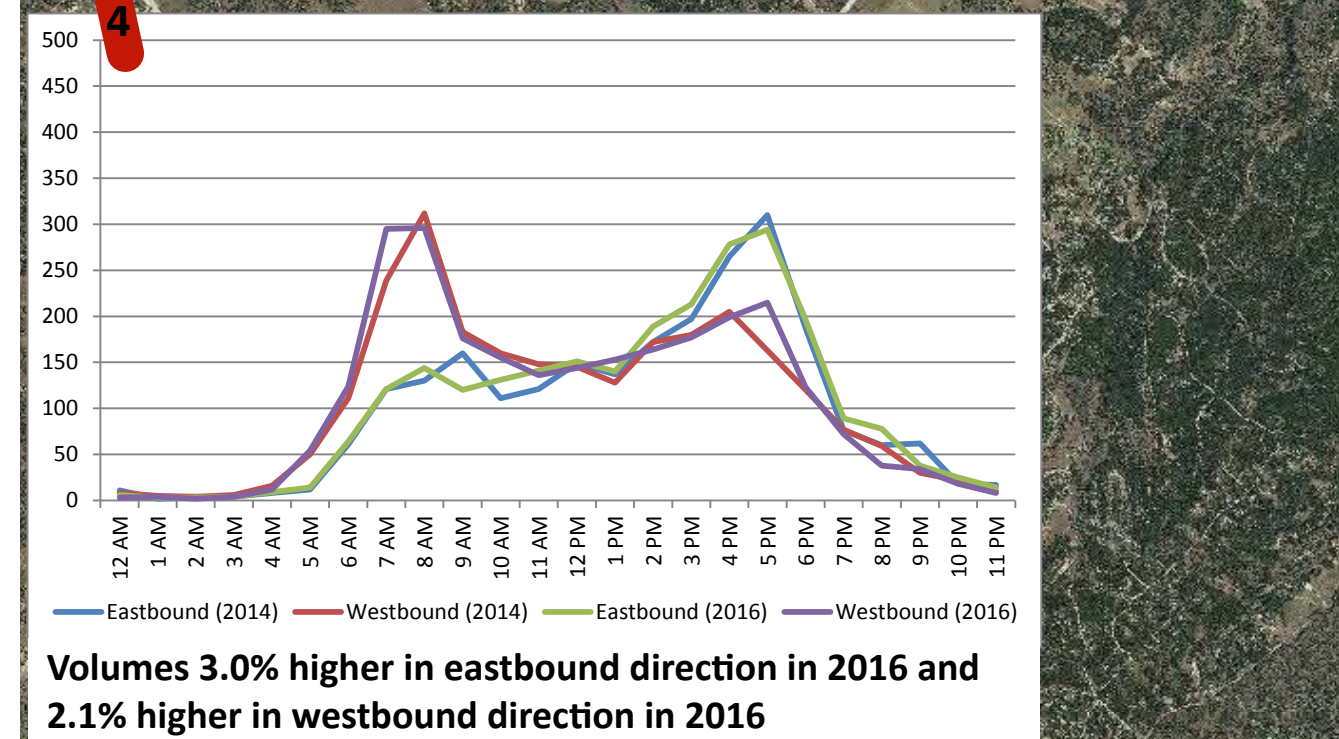
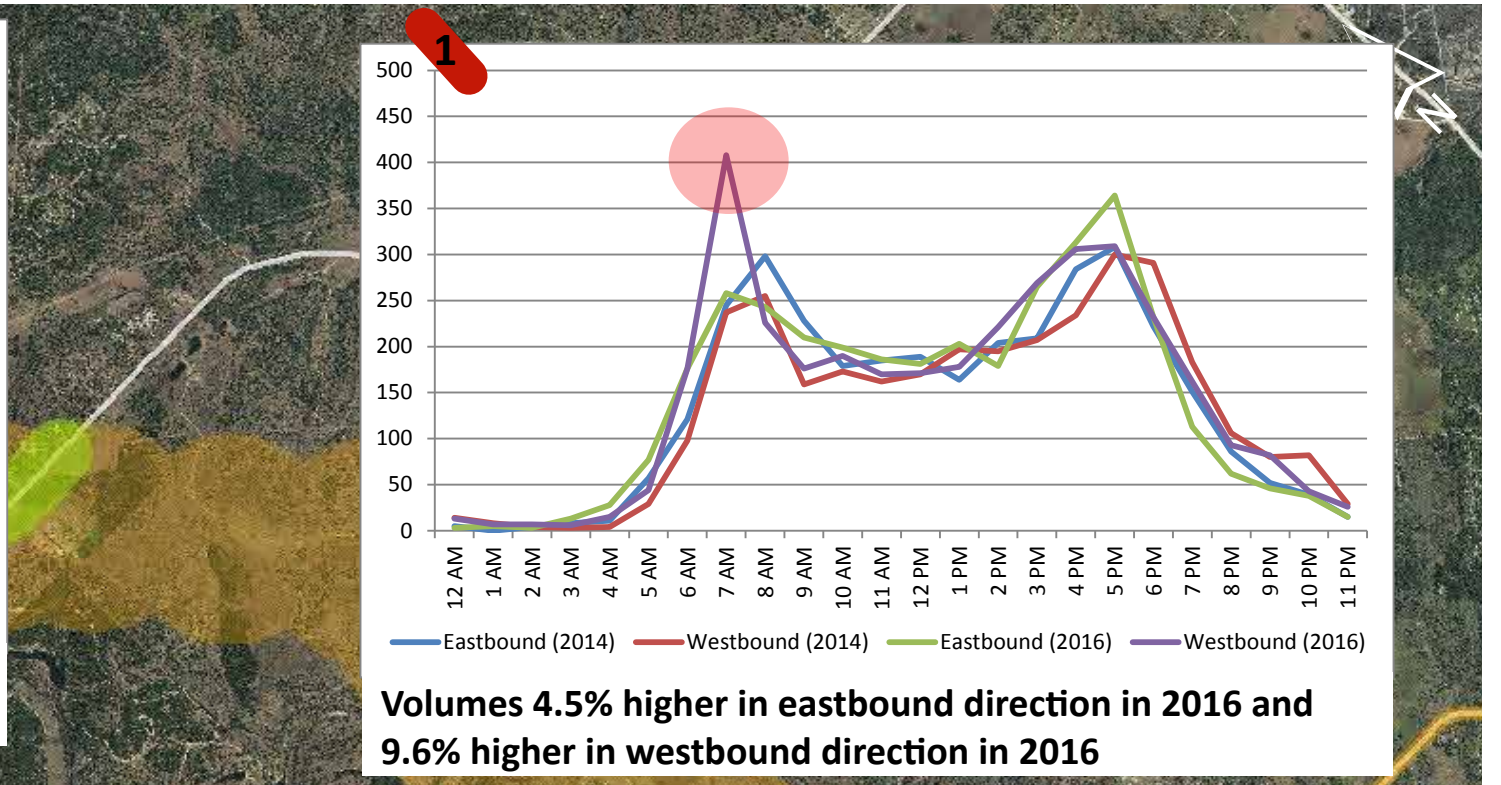
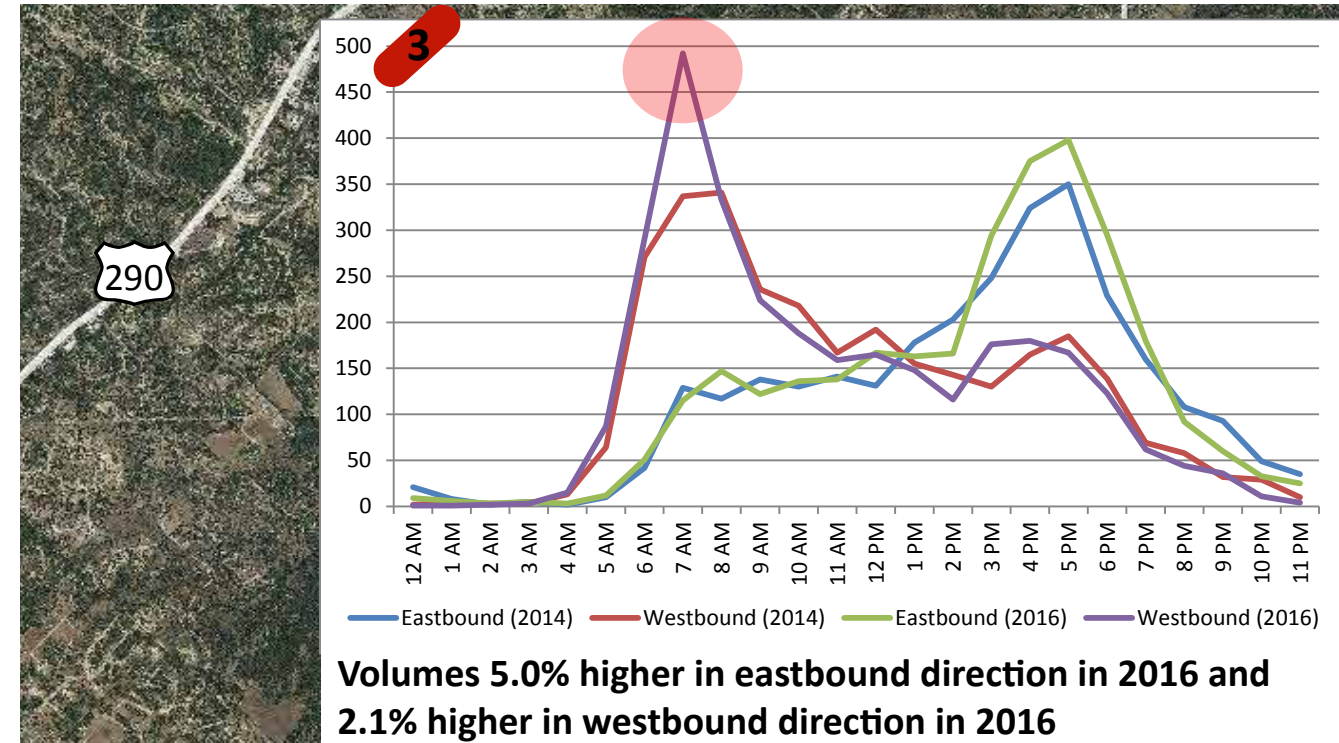
Counts were collected for 24-hours in November 2016 at 11 locations. The 4 locations on FM 150 were previously counted in December 2016. The counts are summarized in the table. Graphs showing the volume profile over the course of the day by direction follow.

| Site # | Site Name | Daily Volume | | | Heavy Vehicle Percentage |
|--------|---|--------------|-------|--------|--------------------------|
| | | EB/SB | WB/NB | Total | |
| 1 | FM 150 - east of FM 3237 | 3,431 | 3,530 | 6,961 | 10.6% |
| 2 | FM 150 - near Onion Creek crossings* | | | | |
| 3 | FM 150 - between FM 1826 and Elder Hill | 2,995 | 3,028 | 6,023 | 7.8% |
| 4 | FM 150 - west of FM 1826 | 2,452 | 2,606 | 5,058 | 7.7% |
| 5 | RM 12 - north of FM 150 | 6,193 | 6,063 | 12,256 | 11.9% |
| 6 | RM 12 - south of FM 150 | 3,879 | 4,011 | 7,890 | 13.6% |
| 7 | FM 1826 - east of FM 150 | 3,364 | 3,361 | 6,725 | 11.2% |
| 8 | FM 1826 - east of Split with FM 967 | 4,211 | 4,200 | 8,411 | 7.7% |
| 9 | FM 967 - southeast of FM 1826 | 2,644 | 2,605 | 5,249 | 13.8% |
| 10 | Elder Hill Road - west of FM 150 | 1,674 | 1,533 | 3,207 | 7.6% |
| 11 | FM 3237 - west of FM 150 | 2,809 | 2,693 | 5,502 | 8.2% |

*Note: we are awaiting updated data for the location near the Onion Creek Crossings due to technical difficulties with the data collection equipment.

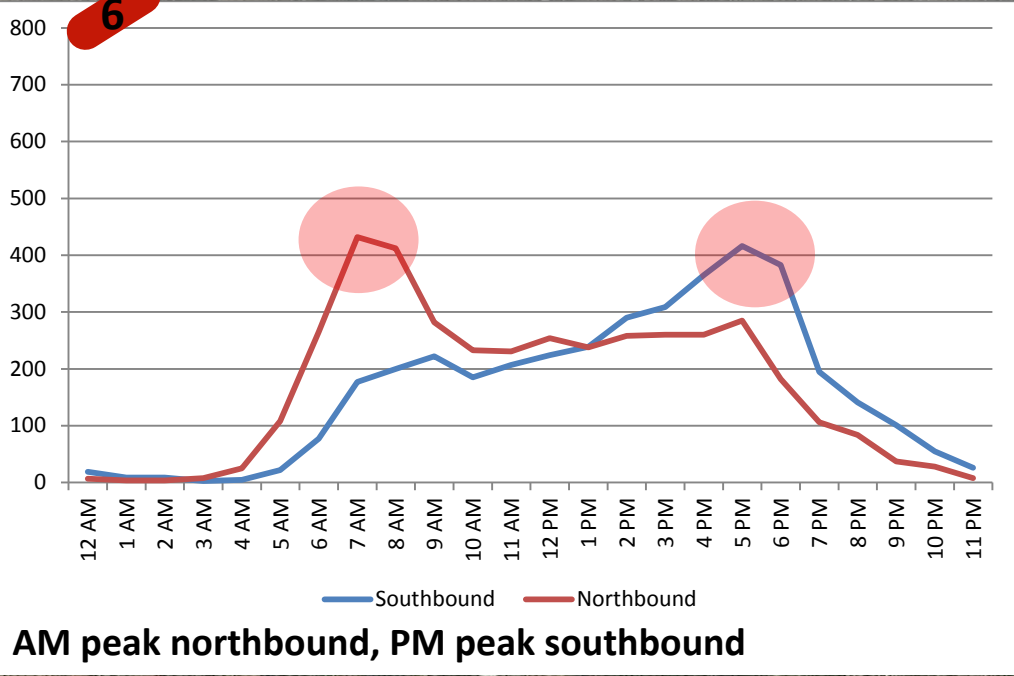
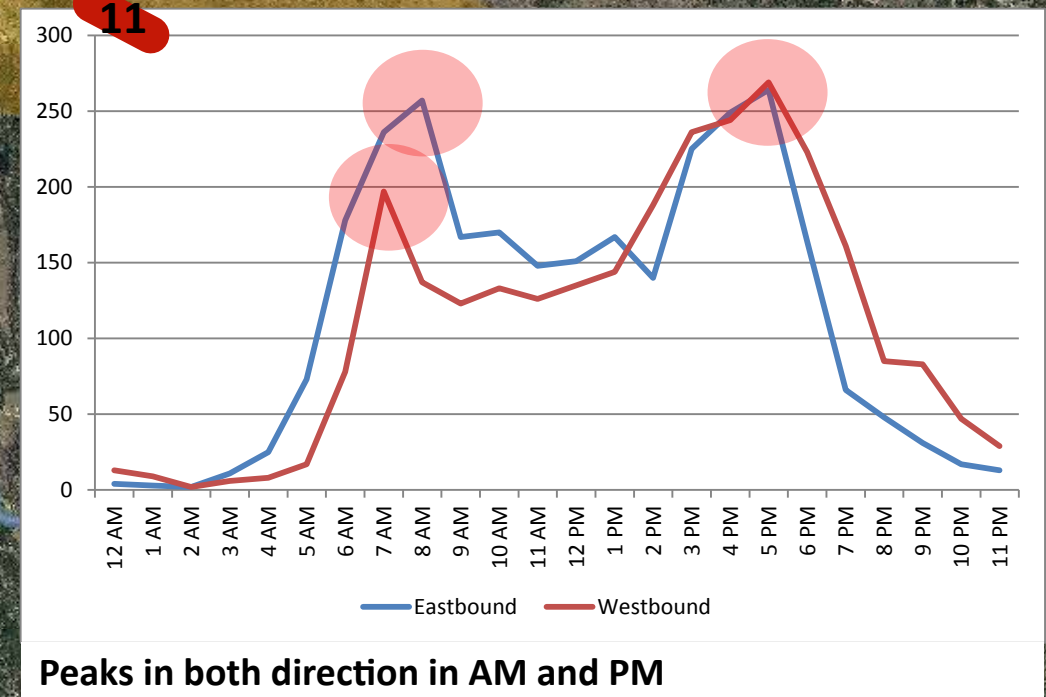
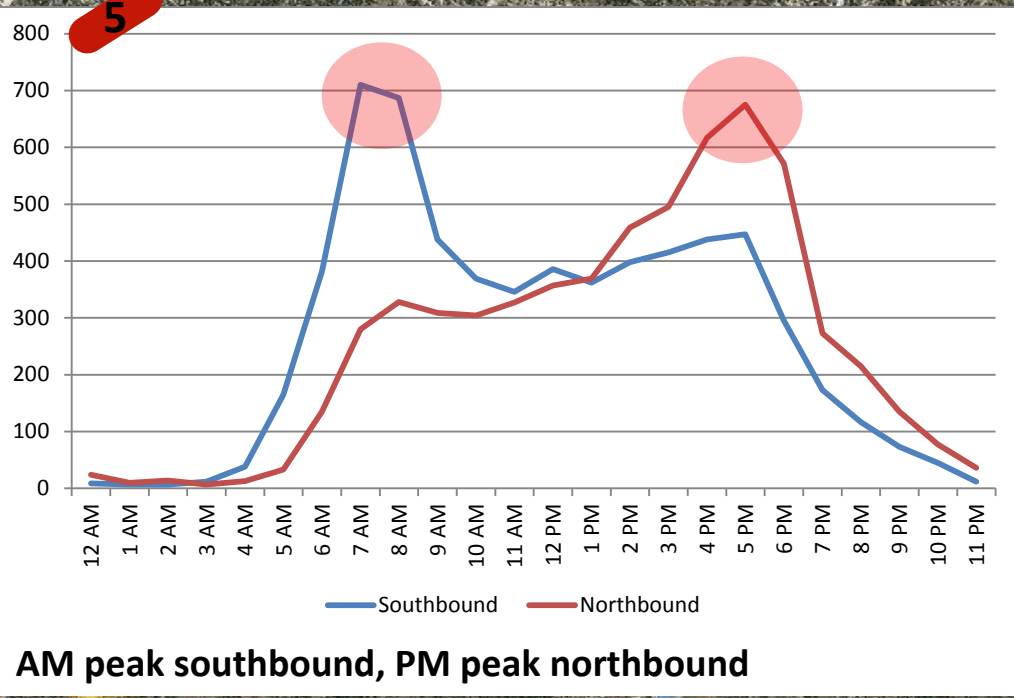
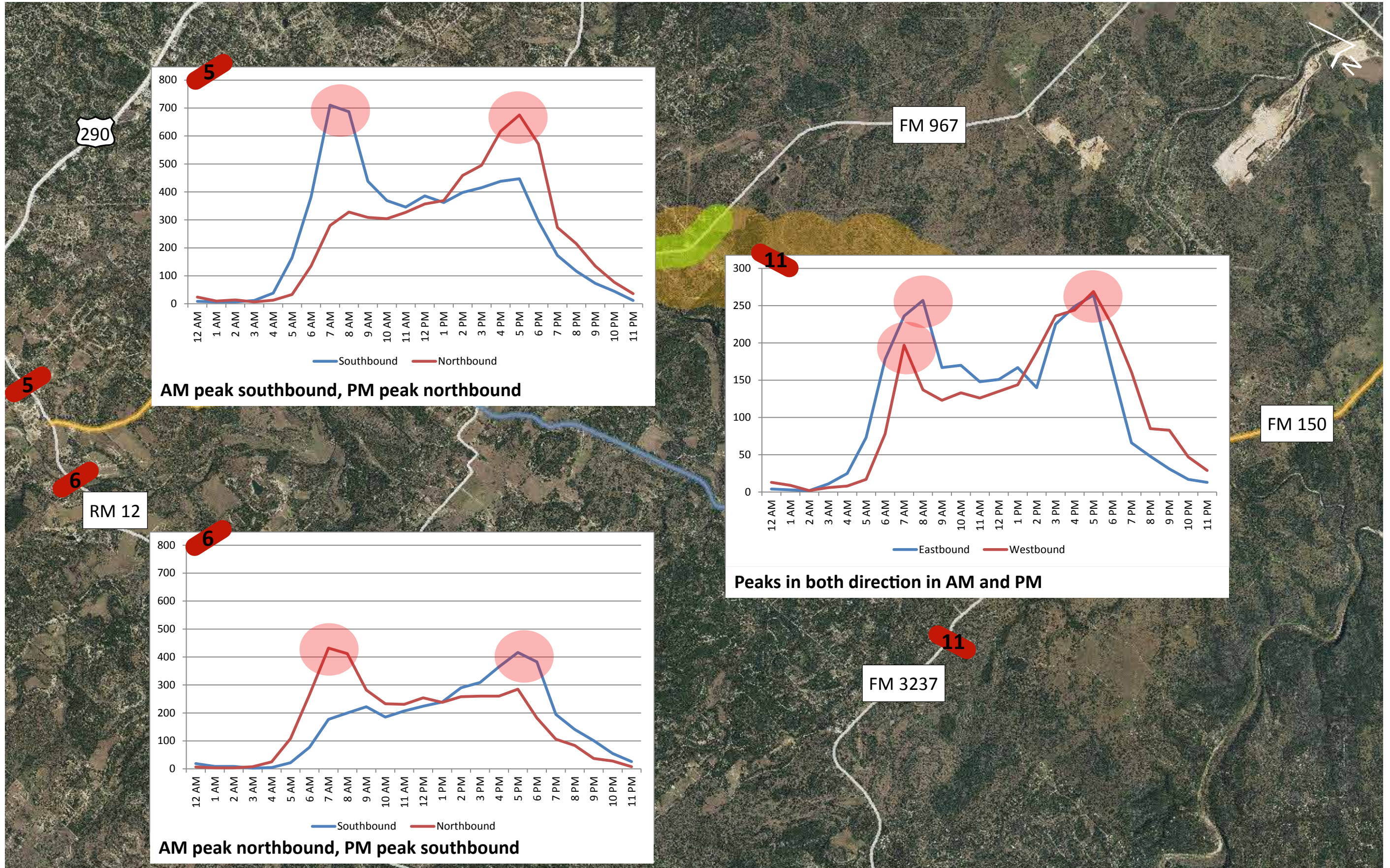
CAP Meeting #3: Tube Count Volume Summary

FM 150 Counts - collected December 2014 and November 2016



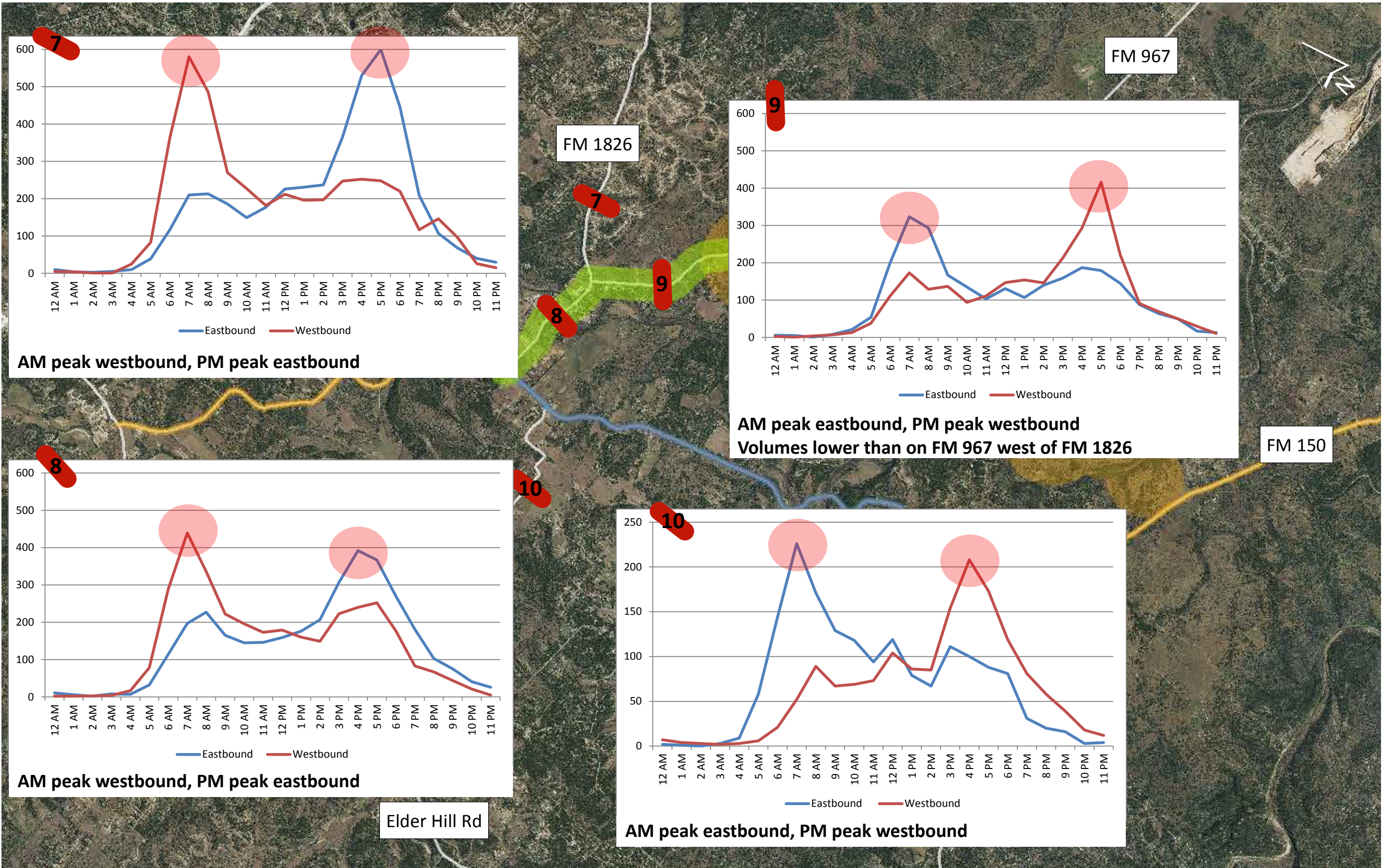
CAP Meeting #3: Tube Count Volume Summary

Counts collected November 2016

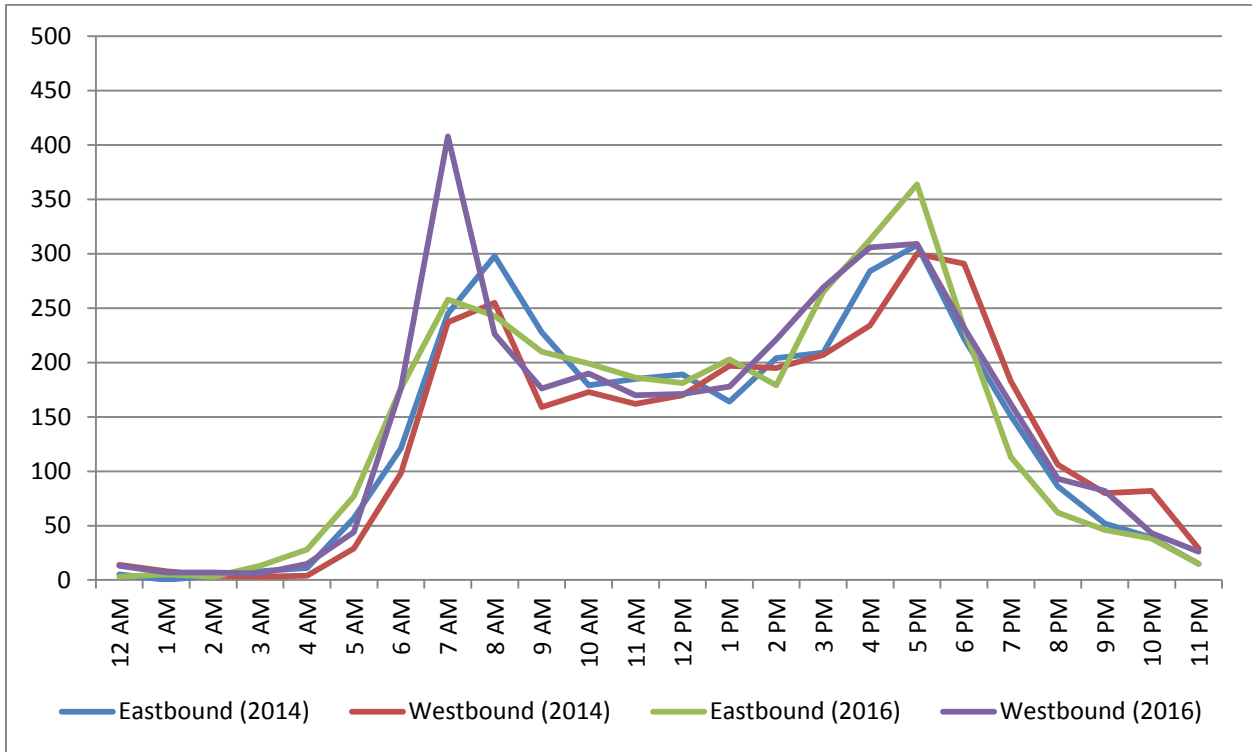


CAP Meeting #3: Tube Count Volume Summary

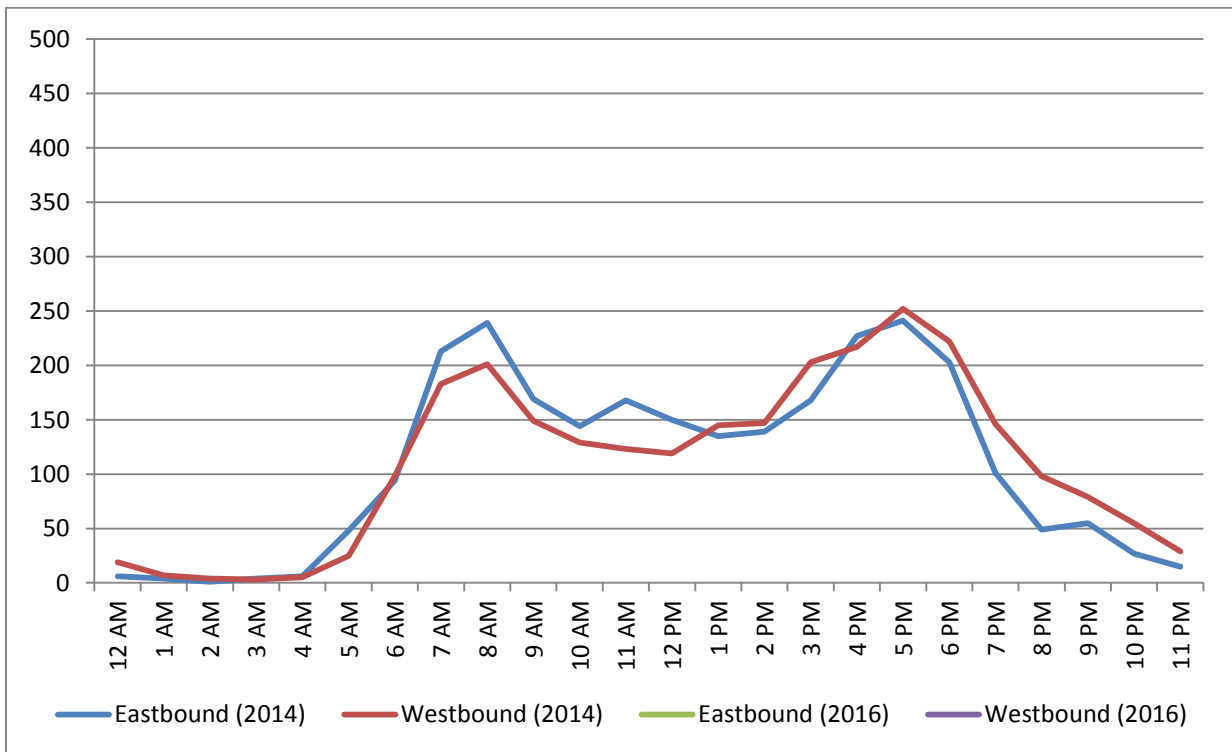
Counts collected November 2016



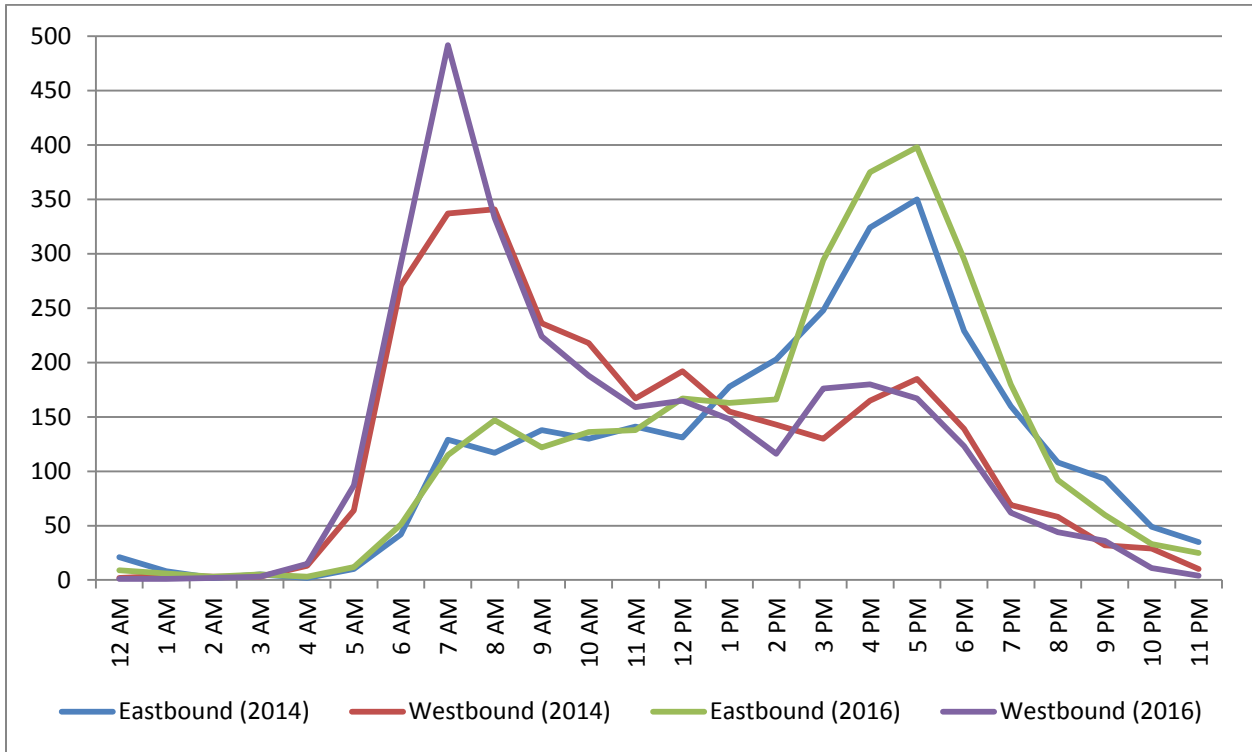
1. FM 150 - east of FM 3237



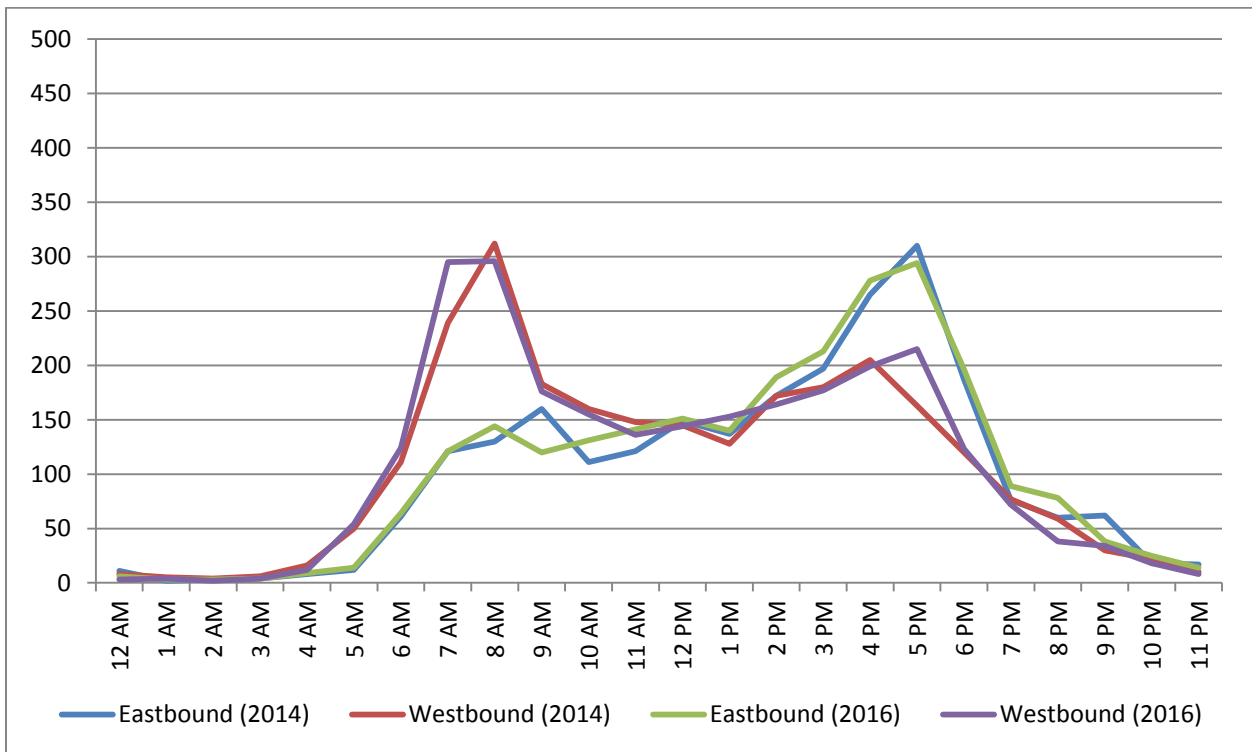
2. FM 150 - near Onion Creek crossings



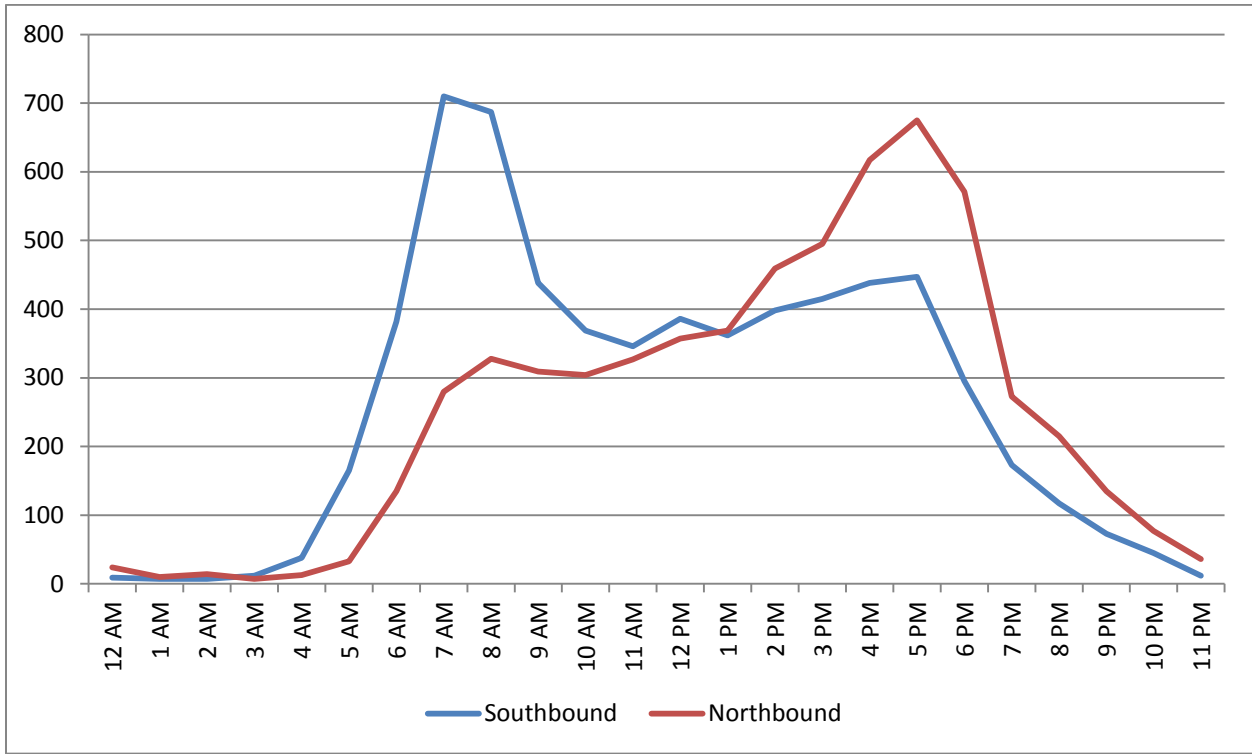
3. FM 150 - between FM 1826 and Elder Hill



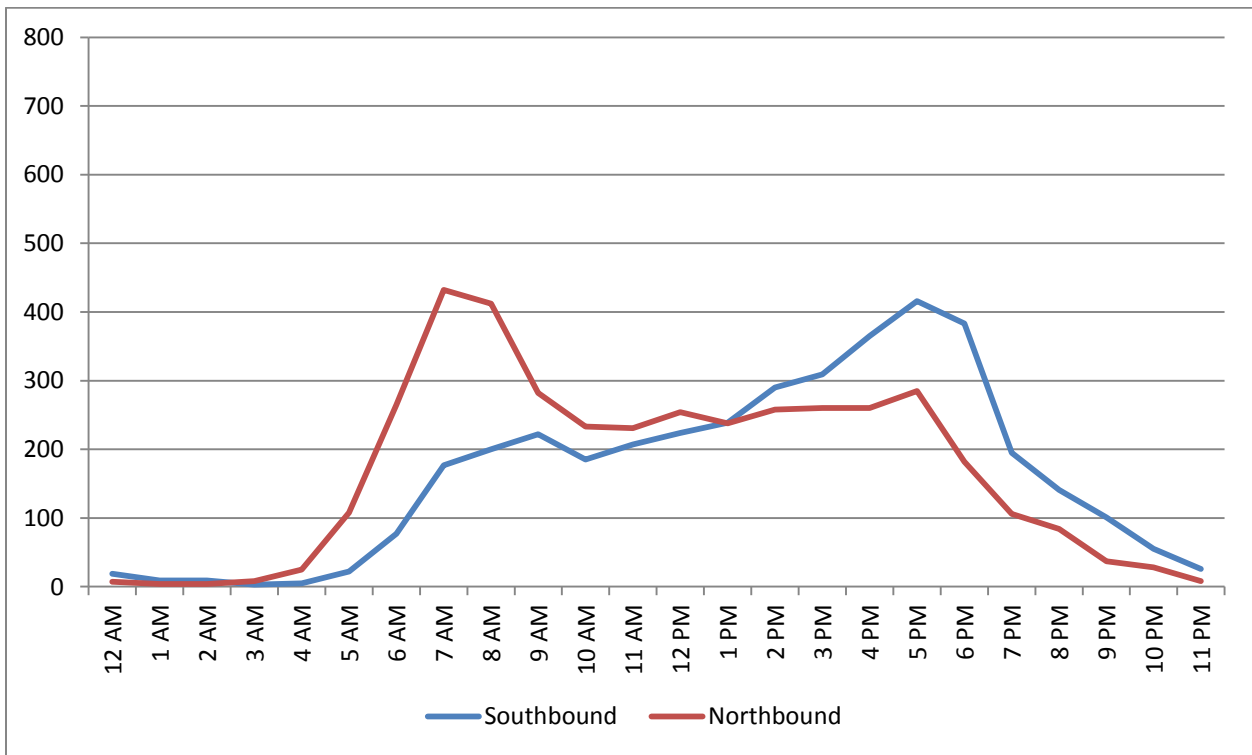
4. FM 150 - west of FM 1826



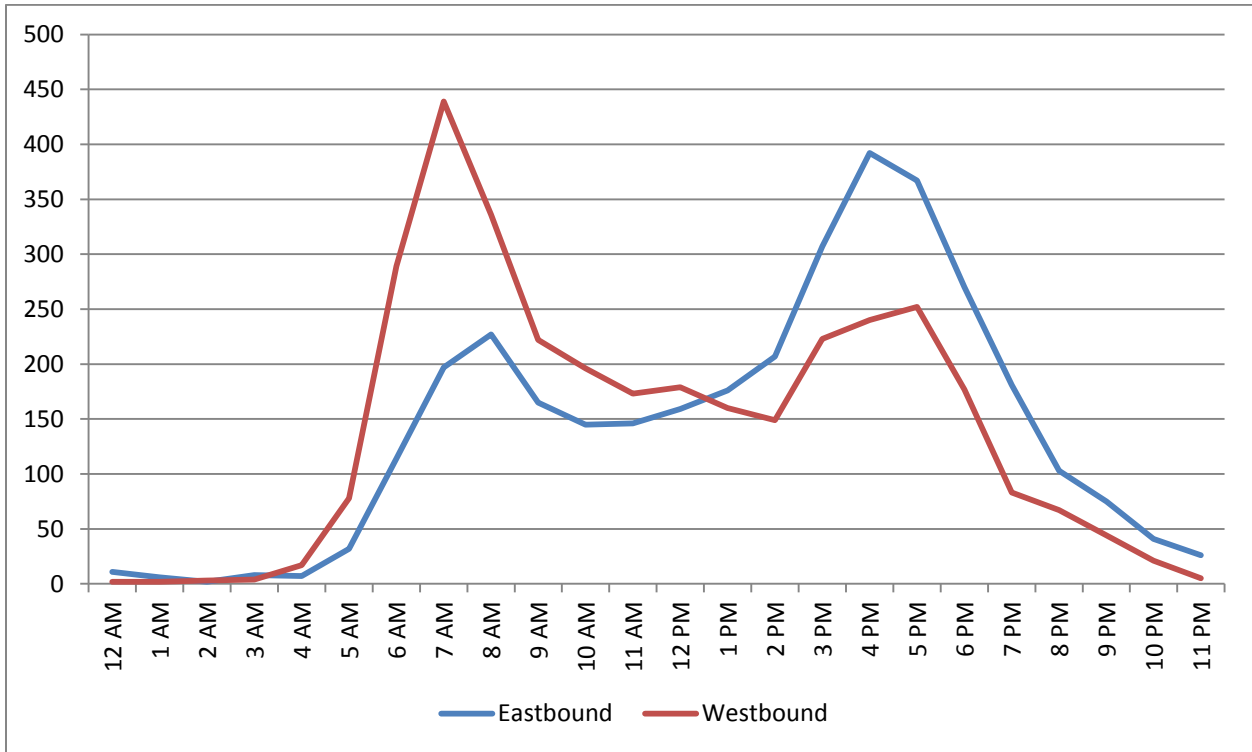
5. RM 12 - north of FM 150 (note different scale on graph)



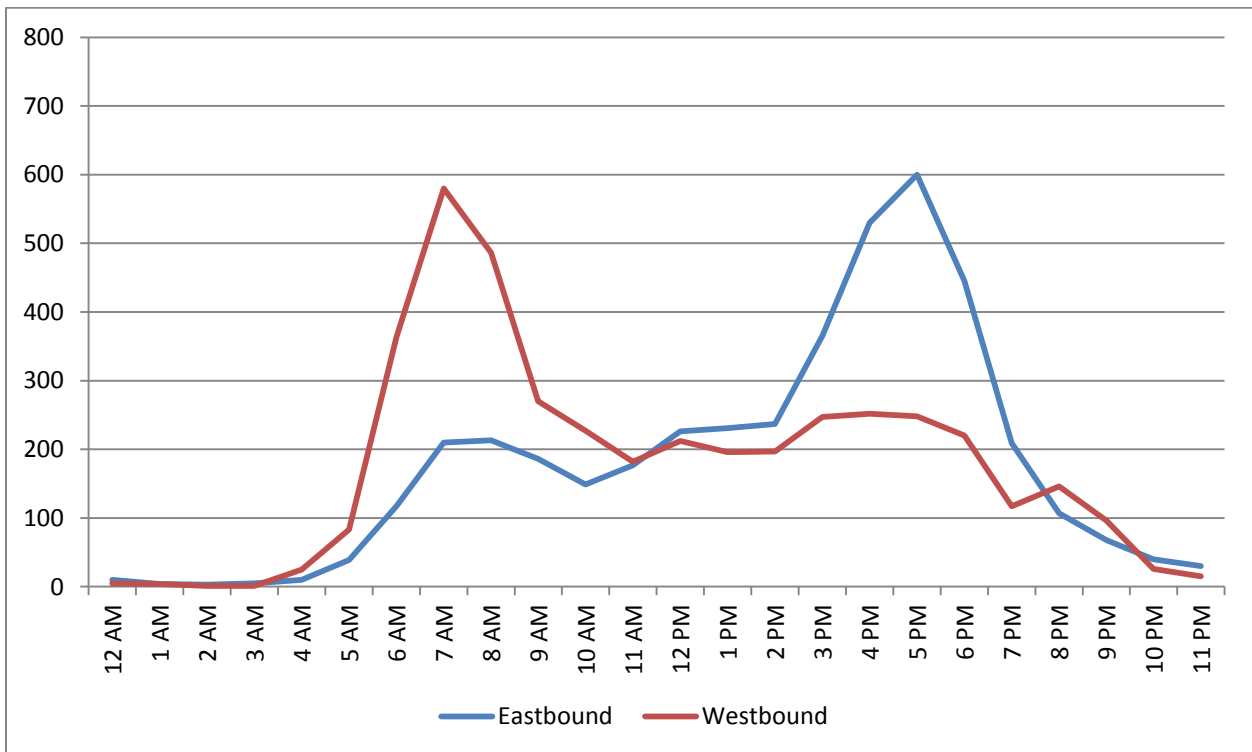
6. RM 12 - south of FM 150 (note different scale on graph)



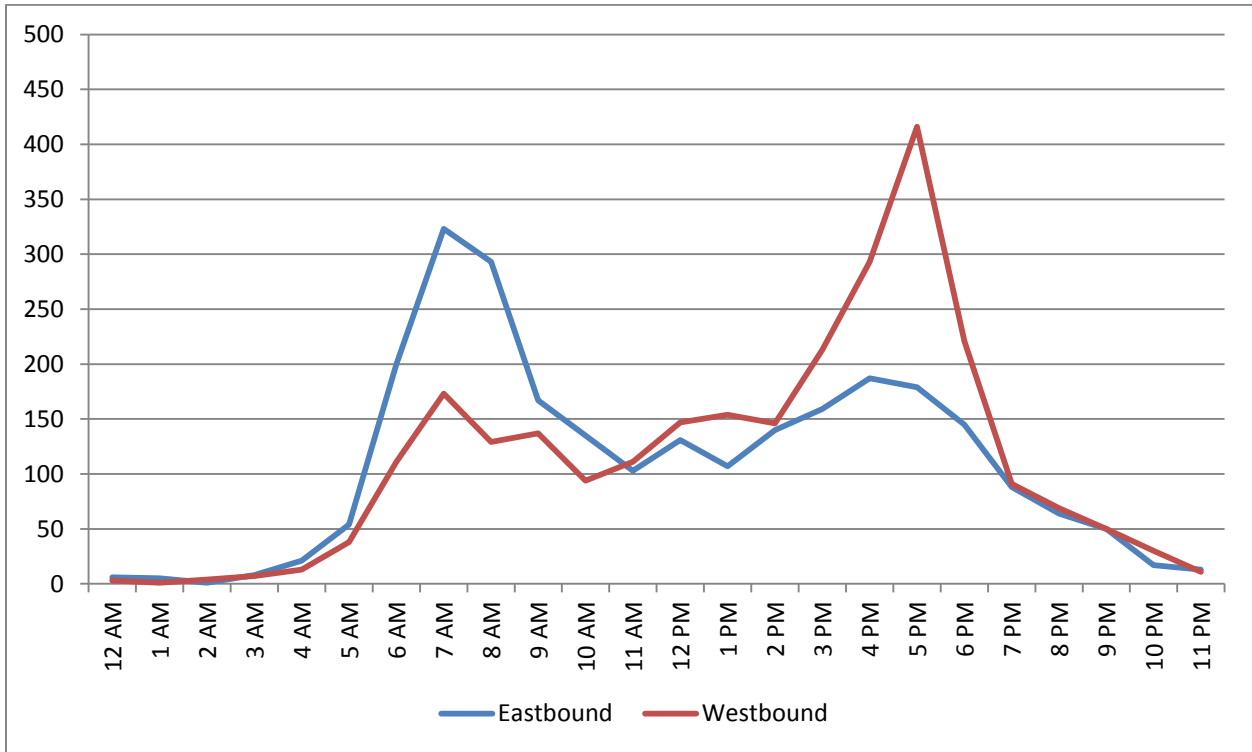
7. FM 1826 - east of FM 150



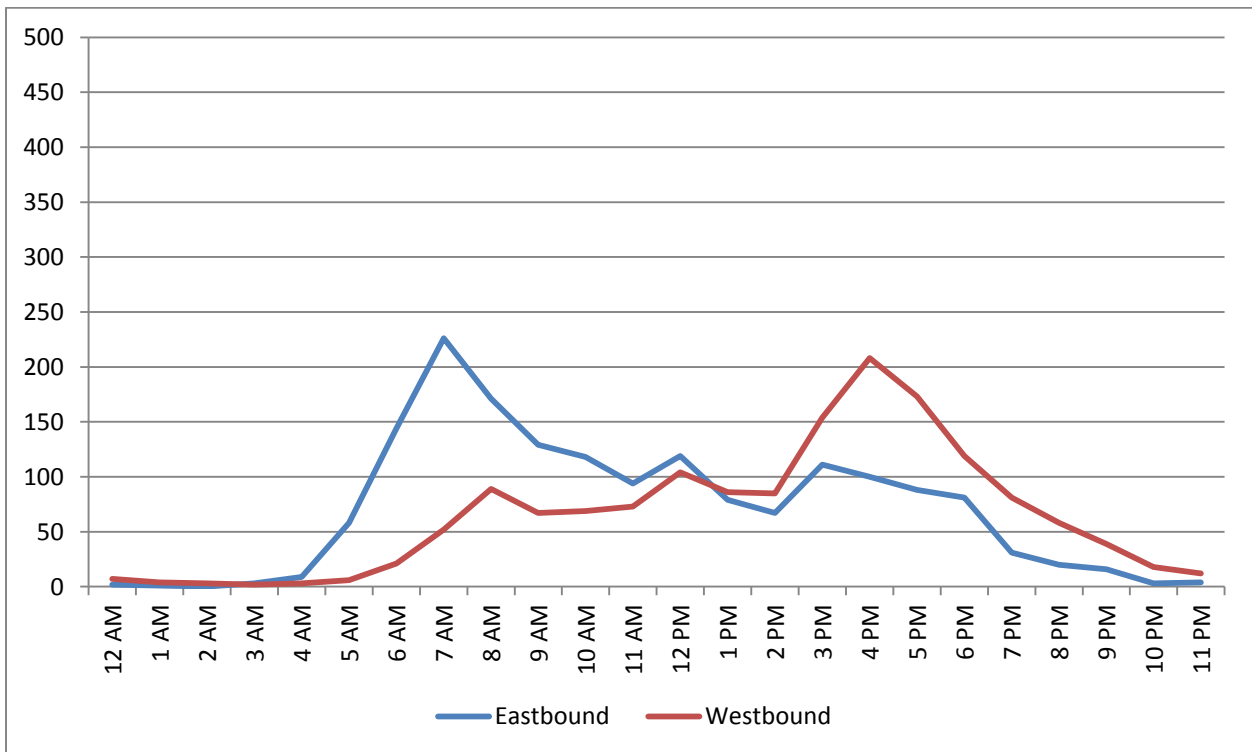
8. FM 1826 - east of Split with FM 967 (note different scale on graph)



9. FM 967 - southeast of FM 1826



10. Elder Hill Road - west of FM 150



11. FM 3237 - west of FM 150

