

WELCOME

The County wants to work closely with the public to make this project the best it can be. Tonight we are here to share project information with the public and obtain public input to be considered during the development of the project.



HCTP DESCRIPTION

Hays County Transportation Plan, adopted in January 2013, proposes a re-alignment of FM 150 to alleviate congestion downtown by providing an alternate route for through traffic west of Kyle.

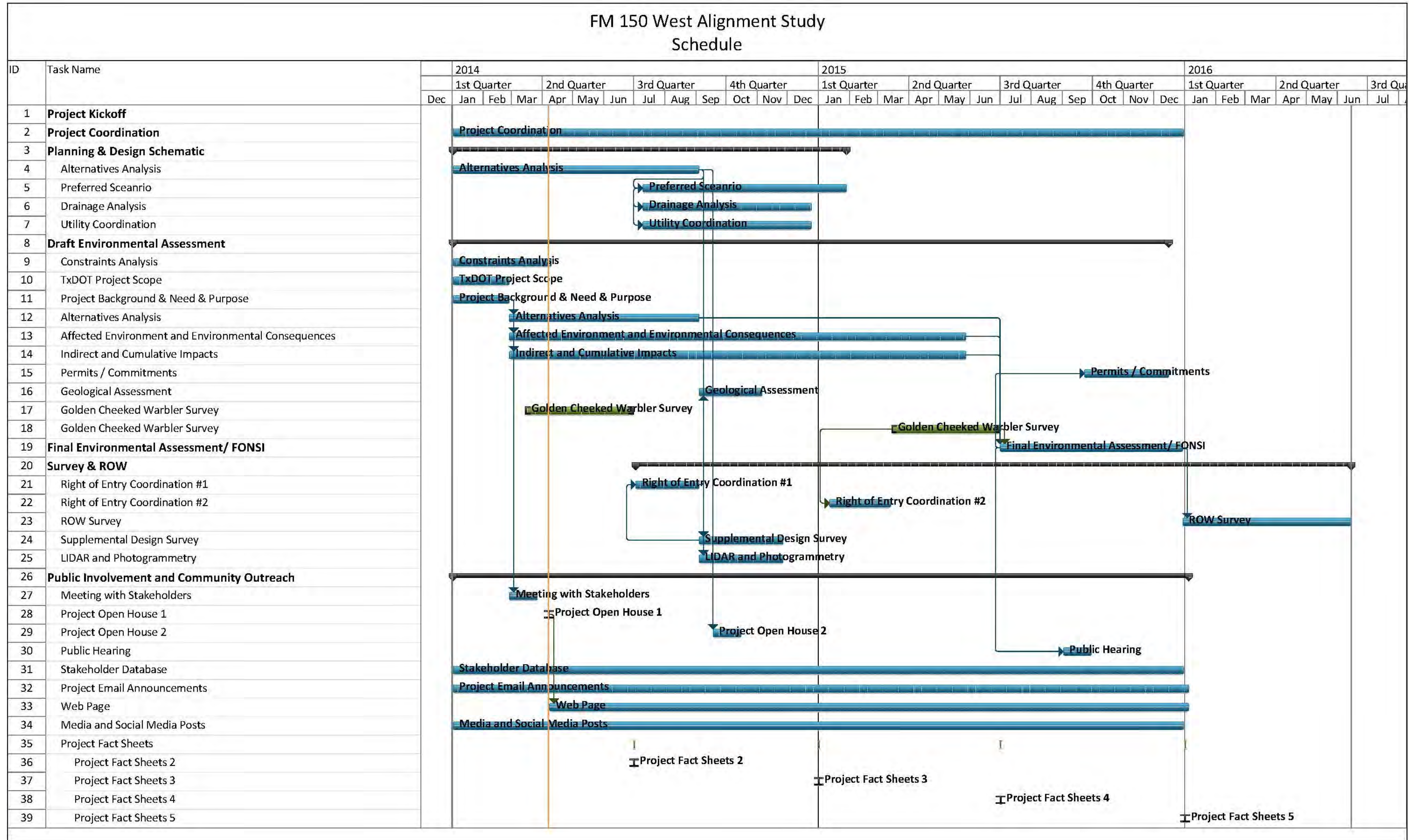
Project Highlights:

- Limited space to improve existing FM 150 in downtown Kyle
- Create an alternate route west of downtown Kyle
- Reduce congestion by providing separate routes for through traffic and local traffic
- Propose 4-lane divided roadway with a typical 150 feet of ROW
- Improve pedestrian and bicycle safety
- Provide a potential connection to the future FM 110 in San Marcos



Schedule

FM 150 West Alignment Study
Schedule



Next Steps

Continue to
Collect FM 150
Data

Review and Evaluate
Public and Stakeholder
Comments

Continue to
Collect Study
Area Data

Develop Alternative
Alignment Corridors

Begin Refinement Process



Next Steps

For Project Information

Arin Gray

Public Information Consultant

512-533-9100 Ext. 12

info@improvefm150.com

Email updates: Email info@improvefm150.com with 'Email Updates' in the subject line.

Project Website: www.improvefm150.com

