

PROVIDE YOUR INPUT

Please review each of the following corridors and their corresponding alignment options, as well as the no-build option, and share your input with the County and project team.

- Complete a survey at this workshop
- Complete a survey at home via this link:

www.surveymonkey.com/s/FM150align

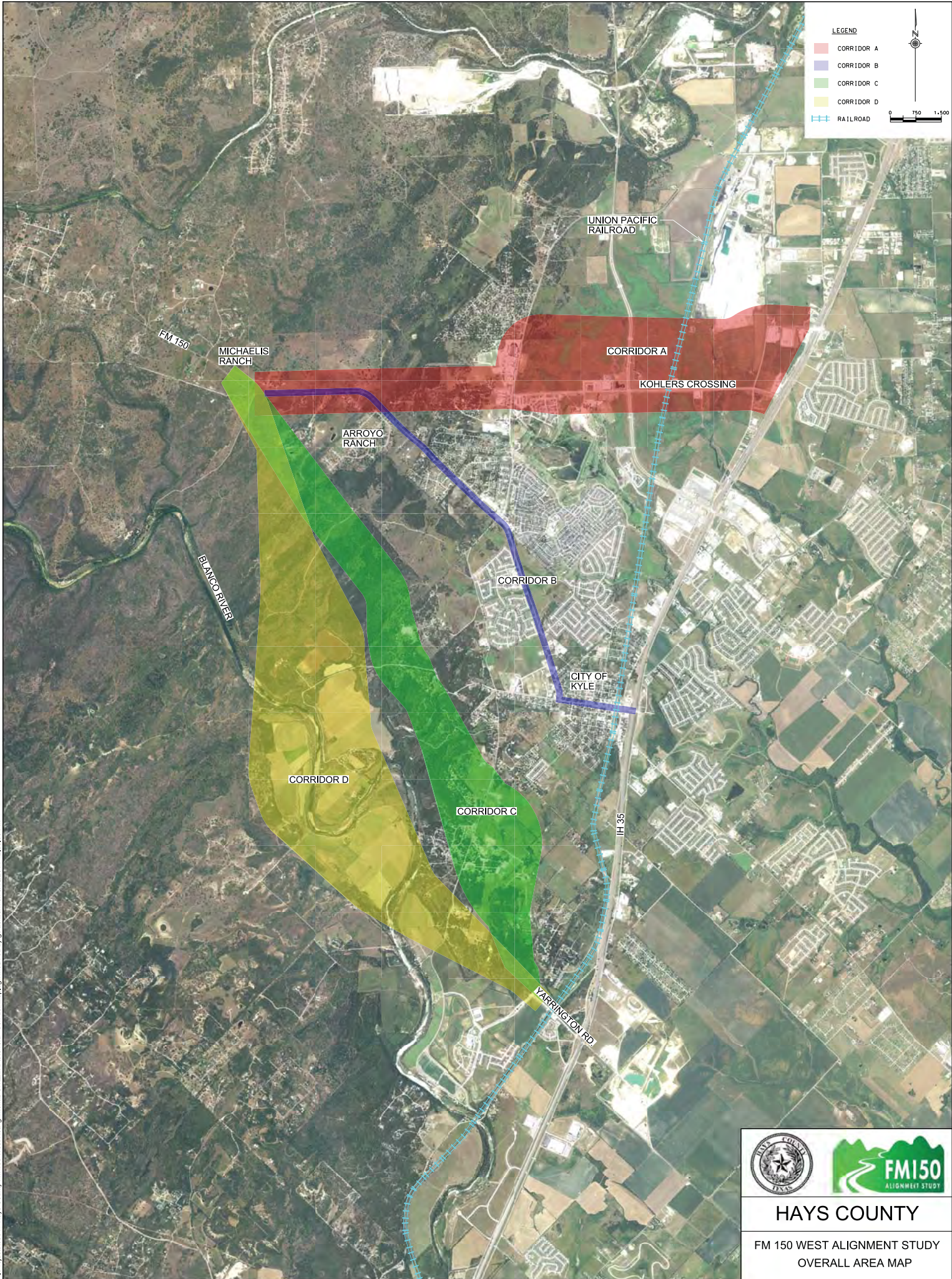
The survey will close October 3, 2014



POSSIBLE SOLUTIONS

- Widen and improve existing Kohler's Crossing and tie into existing FM 150 between Arroyo RR and RM 3237
- Widen and improve existing FM 150 (Center Street) through downtown Kyle
- Develop a new-location alternative south of Kyle and east of the Blanco River from the Yarrington Road-IH 35 intersection that would tie into existing FM 150 between Arroyo RR and RM 3237
- Develop a new-location alternative south of Kyle and west of the Blanco River from the Yarrington Road-IH 35 intersection that would tie into existing FM 150 between Arroyo Ranch Road and FM 3237
- Develop a new-location alternative south of Kyle from the Yarrington Road-IH 35 intersection that would cross the Blanco River and tie into existing FM 150 between Arroyo Ranch Road and RM 3237







LEGEND

- CORRIDOR A
- CORRIDOR B
- CORRIDOR C
- CORRIDOR D
- RAILROAD

0 750 1,500

X:\Projects\0304- Hays County FM 150 West Realignment\DCN\Exhibits\Overall Corridor Map.dgn modified by gblackburn on 9/18/2014 - 2:39:00 PM

HAYS COUNTY

FM 150 WEST ALIGNMENT STUDY
OVERALL AREA MAP