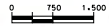


LEGEND

- CORRIDOR D
- ALIGNMENT OPTIONS
- RAILROAD

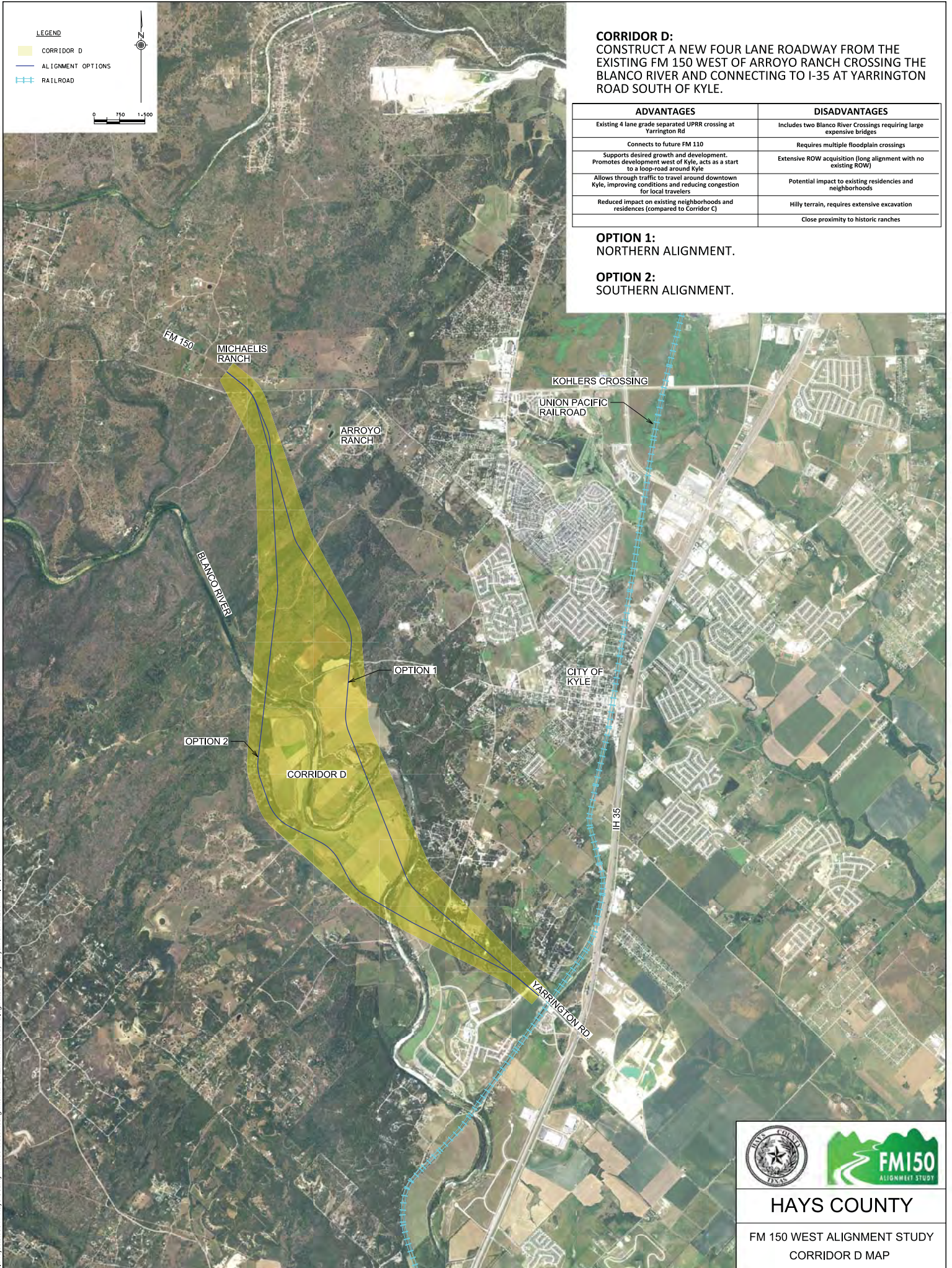


CORRIDOR D:
 CONSTRUCT A NEW FOUR LANE ROADWAY FROM THE EXISTING FM 150 WEST OF ARROYO RANCH CROSSING THE BLANCO RIVER AND CONNECTING TO I-35 AT YARRINGTON ROAD SOUTH OF KYLE.



| ADVANTAGES | DISADVANTAGES |
|---|---|
| Existing 4 lane grade separated UPRR crossing at Yarrington Rd | Includes two Blanco River Crossings requiring large expensive bridges |
| Connects to future FM 110 | Requires multiple floodplain crossings |
| Supports desired growth and development. Promotes development west of Kyle, acts as a start to a loop-road around Kyle | Extensive ROW acquisition (long alignment with no existing ROW) |
| Allows through traffic to travel around downtown Kyle, improving conditions and reducing congestion for local travelers | Potential impact to existing residences and neighborhoods |
| Reduced impact on existing neighborhoods and residences (compared to Corridor C) | Hilly terrain, requires extensive excavation |
| | Close proximity to historic ranches |

OPTION 1:
 NORTHERN ALIGNMENT.

OPTION 2:
 SOUTHERN ALIGNMENT.



X:\Projects\0304 - Hays County FM 150 West Realignment\DCN\Exhibits\Corridor D.dgn modified by dcrjan on 9/18/2014 - 4:41:53 PM

HAYS COUNTY

FM 150 WEST ALIGNMENT STUDY
 CORRIDOR D MAP