


LEGEND

- CORRIDOR C
- ALIGNMENT OPTIONS
- RAILROAD

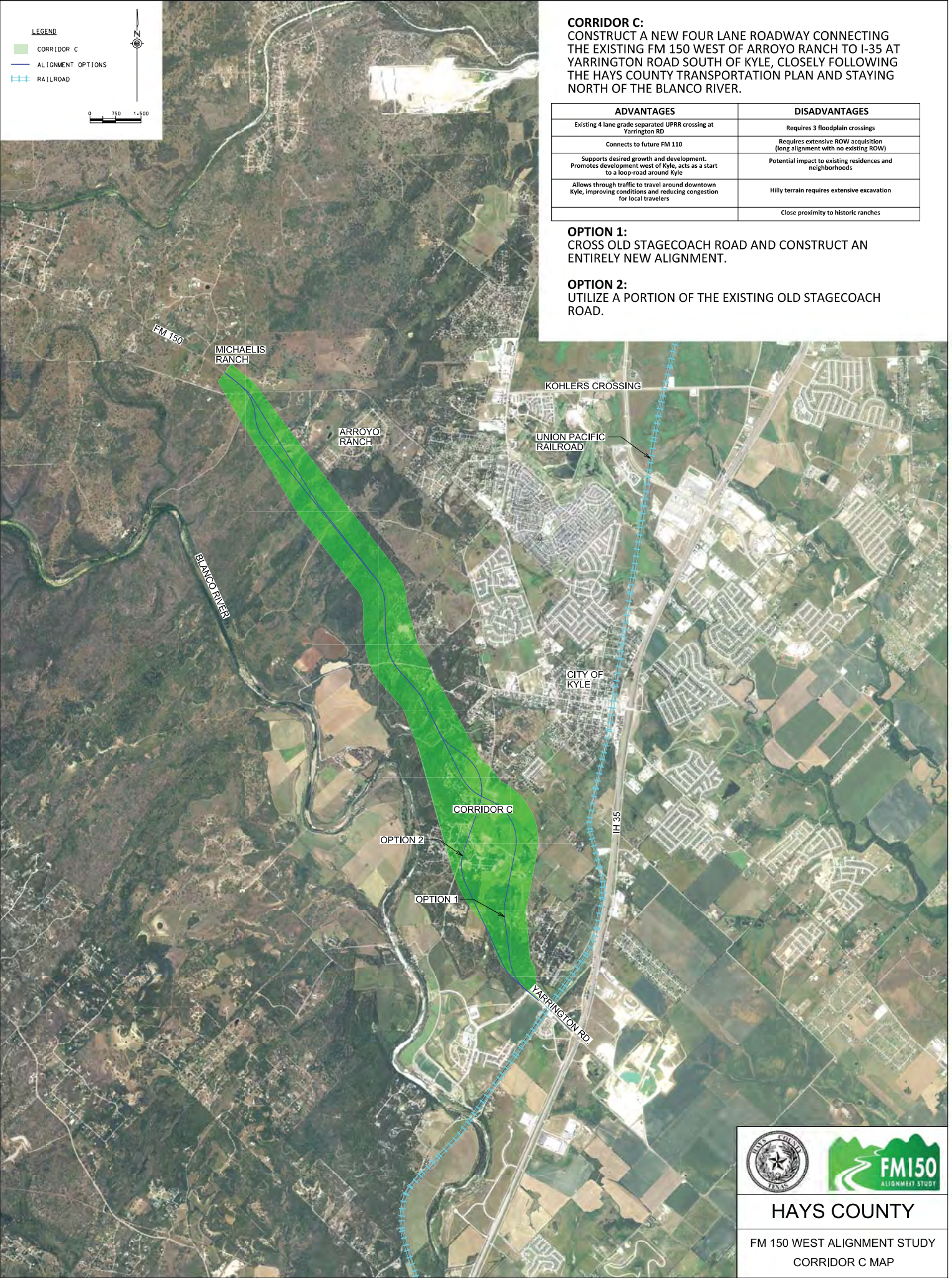


CORRIDOR C:
 CONSTRUCT A NEW FOUR LANE ROADWAY CONNECTING THE EXISTING FM 150 WEST OF ARROYO RANCH TO I-35 AT YARRINGTON ROAD SOUTH OF KYLE, CLOSELY FOLLOWING THE HAYS COUNTY TRANSPORTATION PLAN AND STAYING NORTH OF THE BLANCO RIVER.



ADVANTAGES	DISADVANTAGES
Existing 4 lane grade separated UPRR crossing at Yarrington RD	Requires 3 floodplain crossings
Connects to future FM 110	Requires extensive ROW acquisition (long alignment with no existing ROW)
Supports desired growth and development. Promotes development west of Kyle, acts as a start to a loop-road around Kyle	Potential impact to existing residences and neighborhoods
Allows through traffic to travel around downtown Kyle, improving conditions and reducing congestion for local travelers	Hilly terrain requires extensive excavation
	Close proximity to historic ranches

OPTION 1:
 CROSS OLD STAGECOACH ROAD AND CONSTRUCT AN ENTIRELY NEW ALIGNMENT.

OPTION 2:
 UTILIZE A PORTION OF THE EXISTING OLD STAGECOACH ROAD.



X:\Projects\0304- Hays County FM 150 West Realignment\DCN\Exhibits\Corridor C.dgn modified by gbackburn on 9/19/2014 - 9:47:22 AM

HAYS COUNTY

FM 150 WEST ALIGNMENT STUDY
CORRIDOR C MAP